

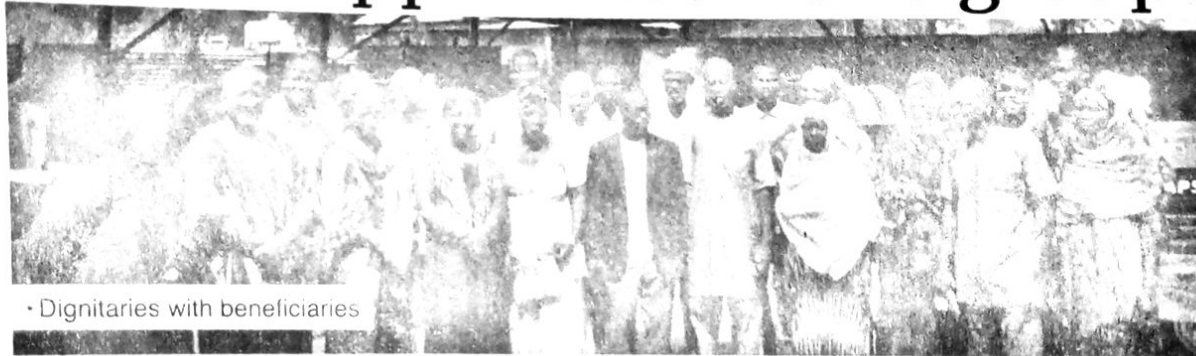
Plan International supports women's groups

FARM implements, business support items, and educational materials have been presented to some women's groups in the Kumbungu and Tolon districts of the Northern Region as part of efforts to empower them through sustainable entrepreneurship and community development.

The items included polytanks, tricycles, deep freezers, grinding mills, soya planters, threshers, galvanised chain links, metal poles, Learning through Play Materials for children in the project communities,

The rest were wellington boots, sets of smart television, personal protective equipment for honey producers, knapsack sprayers, gas cylinders, soya and snail dryers, packaging materials for snails, and honey.

The items were presented by



• Dignitaries with beneficiaries

Plan International Ghana in partnership with the Women Integrated Development Organisation, and Urbanet with funding support from the Global Affairs Canada.

It formed part of Women's Innovation for Sustainable Enterprises (WISE) project and the beneficiaries were the project's mentees, selected saving groups, and safe spaces.

The presentation formed part of

activities to end the WISE project, which is a five-year initiative implemented in Northern, Bono, Bono East, and Ahafo regions.

Mr Gbana Sulemana, Northern Programme Influencing and Impact Area Manager, Plan International Ghana, speaking during the presentation of the items to the beneficiaries in Tamale, said it formed part of efforts to improve women's agency and economic empower-

ment.

The WISE project seeks to improve women's agency to exercise decisions regarding their participation in economic growth and increased productivity, profitability and innovation of women-owned businesses.

Mr Sulemana also indicated that 12,641 women benefited directly from the project with 4,046 receiving targeted support for agricultural

and green business activities.

He said, "The items we are handing over to you are not just tools; they are symbols of your potential and the bright future that lies ahead."

He continue that the project had led to growth in productivity, profitability, and innovation amongst women-owned businesses, adding it had seen women take their decisions with confidence and authority.

Madam Bridgette Sheini, Head, Kumbungu District Business Advisory Centre of the Ghana Enterprises Agency, commended Plan International Ghana and partners for championing women's economic growth and development.

She pledged to facilitate periodic supervision of the beneficiaries to ensure the sustainability of the project in the district. -GNA